

# **HADK-W50I**

## **FLUID HAMMER (WAI IR350)**



### **Key features**

- Hi-frequency environmentally friendly drilling for fastest penetration rates
- Customizable to optimize performance in open hole or cased hole projects
- Bit sizes 5 - 6" / 127 - 153mm
- Low Maintenance: Simple service ECO kits for self service schedules
- Premium alloy and unique surface treatments used for longer lasting tools
- Optional smooth wear sleeve or with integrated stabilizing ribs for minimized hole deviation
- Lower Operating costs due to reduced energy consumption
- Will drill a straighter hole than a conventional air hammer

# Parts List (WAI IR350)

NO	Part Name	Qty	Part Number
1	Top Sub	1	HPDK-W5002
2	Top Sub O-Ring	1	See Sealkit
3	Filter Cage	1	HPDK-W5027
4	Filter	1	HPDK-W5026
5	Check Valve	1	HPDK-W5004
6	C.V. Spring	1	HPDK-W5003
7	C.V. Seat	1	HPDK-W5005
8	Upper Valve Cap	1	See Sealkit
9	Valve Cap	1	HPDK-W5025
10	Valve Cap O-Ring	1	See Sealkit
11	Wear Bushing	1	HPDK-W5024
12	Valve	1	HPDK-W5007
13	Valve Housing	1	HPDK-W5010
14	Valve Housing Seal	1	See Sealkit
15	Valve Housing Seal	1	See Sealkit
16	Valve Housing Seal	1	See Sealkit
17	Valve Housing Seal	1	See Sealkit
18	Inner Tube	1	HPDK-W5009
19	Piston	1	HPDK-W5014
20	Cylinder	1	HPDK-W5012
21	Piston Bushing Seal OD	1	See Sealkit
22	Piston Bearing	1	HPDK-W5021
23	Piston Bushing Seal ID	1	See Sealkit
24	Piston Bushing Seal ID	1	See Sealkit
25	Piston Bushing Seal ID	1	See Sealkit
26	Piston Bushing Seal ID	1	See Sealkit
27	Piston Bushing Seal ID	1	See Sealkit
28	Piston Bushing Seal ID	1	See Sealkit
29	Piston Bushing Seal ID	1	See Sealkit
30	Piston Bushing Seal ID	1	See Sealkit
31	Wear Sleeve	1	HPDK-W5001
32	Bit Bearing	1	HPDK-W5020
33	Bit Ret. Ring	1	HPDK-W5018
34	Bit Ret. O-Ring	1	See Sealkit
35	Drive Sub	1	HPDK-W5022
Sealkit (Items 2, 8, 10, 14-17, 21, 23-30, 34)			HPDK-W50SEALKIT
Complete Hammer			HADK-W501

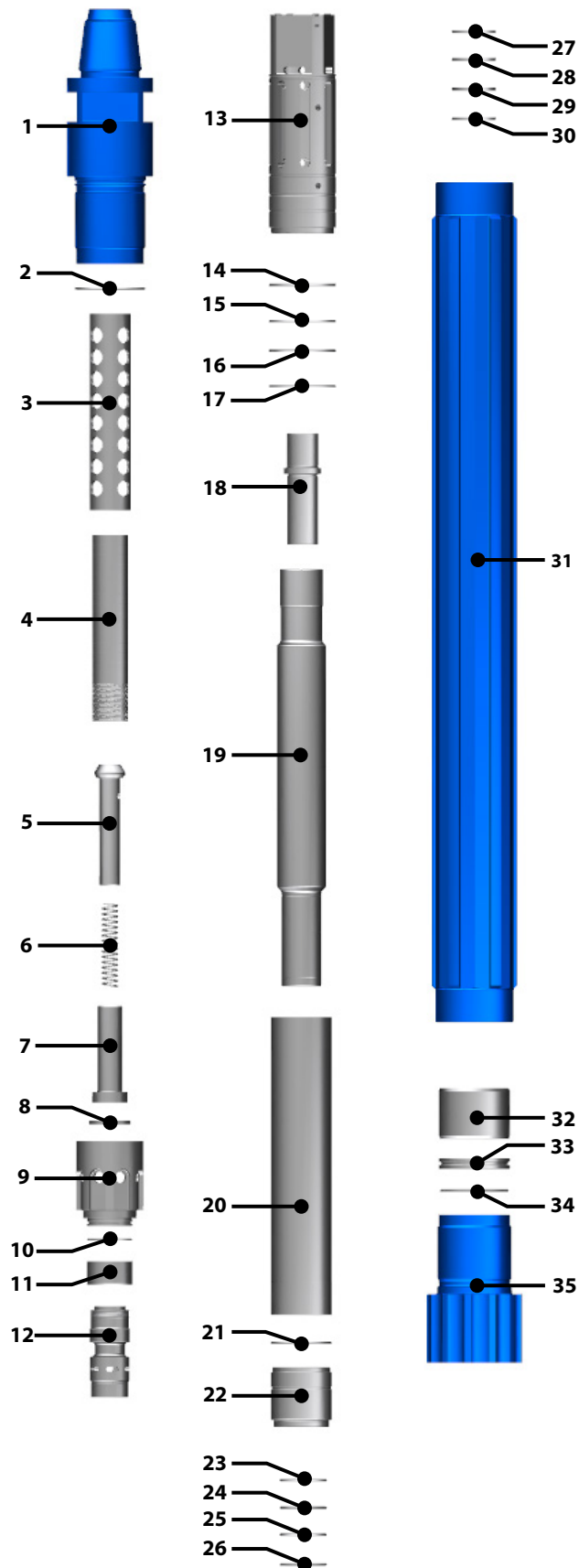
### Dimensions & Weights

Top Sub	3.5" API REG PIN
OAL (in / mm)	63.58 / 1615
OD Range (in / mm)	5 / 127
Weight w/o bit (lbs / Kg)	245 / _____
Piston Weight (lbs / Kg)	32 / _____

### Drilling Parameters

Working Pressure (PSI / Bar)	900-2650 / _____
Application Bit (in / mm)	5-6 / 127-153
Feed Force (FT-lbs / M-Kg)	2750-5500 / _____
Rotation Speed (RPM)	47-75
Rotation Torque (FT-lbs / M-Kg)	1100-2240 / _____
Frequency (blows / min)	3300

# Exploded view



### Fluid Consumption

PSI	Min	Max
New (Gal/Min)	48	80
Worn (Gal/Min)	73	120