

HADK-W80I

FLUID HAMMER (WAI IR380)



Key features

- Hi-frequency environmentally friendly drilling for fastest penetration rates
- Customizable to optimize performance in open hole or cased hole projects
- Bit sizes 8.5 - 10.5" / 216 - 267mm
- Low Maintenance: Simple service ECO kits for self service schedules
- Premium alloy and unique surface treatments used for longer lasting tools
- Optional smooth wear sleeve or with integrated stabilizing ribs for minimized hole deviation
- Lower Operating costs due to reduced energy consumption
- Will drill a straighter hole than a conventional air hammer

Parts List (WAI IR380)

NO	Part Name	Qty	Part Number
1	Top Sub	1	HPDK-W8002
2	Top Sub O-Ring	1	See Sealkit
3	Upper Breakout Ring	1	HPDK-W8008
4	Check Valve	1	HPDK-W8004-Mega8
5	C.V. Spring	1	HPDK-W8003-Mega8
6	Top Filter	1	HPDK-W8026-2-Mega8
7	C.V. Seat	1	HPDK-W8005-Mega8
8	Filter Cage	1	HPDK-W8027-Mega8
9	Bottom Filter	1	HPDK-W8026-1-Mega8
10	Spacer	1	HPDK-W8028
11	Valve Cap	1	HPDK-W8025
12	Valve Cap O-Ring	1	See Sealkit
13	Wear Bearing	1	HPDK-W8024
14	Valve	1	HPDK-W8007
15	Valve Housing Seal	1	See Sealkit
16	Valve Housing Seal	1	See Sealkit
17	Valve Housing Seal	1	See Sealkit
18	Valve Housing	1	HPDK-W8010
19	Inner Tube	1	HPDK-W8009
20	Piston	1	HPDK-W8014
21	Cylinder	1	HPDK-W8012
22	Piston Bushing Seal OD	1	See Sealkit
23	Piston Bearing	1	HPDK-W8021
24	Piston Bushing Seal ID	1	See Sealkit
25	Piston Bushing Seal ID	1	See Sealkit
26	Piston Bushing Seal ID	1	See Sealkit
27	Piston Bushing Seal ID	1	See Sealkit
28	Piston Bushing Seal ID	1	See Sealkit
29	Piston Bushing Seal ID	1	See Sealkit
30	Piston Bushing Seal ID	1	See Sealkit
31	Piston Bushing Seal ID	1	See Sealkit
32	Wear Sleeve	1	HPDK-W8001
33	Bit Bearing	1	HPDK-W8020
34	Piston Bushing Seal ID	1	See Sealkit
35	Bit Ret. Ring	1	HPDK-W8018
36	Bit Ret. O-Ring	1	See Sealkit
37	Lower B.O. Ring	1	HPDK-W8023
* 38	Drive Sub	1	HPDK-W8022
** 39	Cushion Ring	1	HPDK-W022DP
	Sealkit (Items 2, 12, 15-17, 22, 24-31, 34, 36)	1	HPDK-W80SEALKIT
	Complete Hammer		HADK-W80I

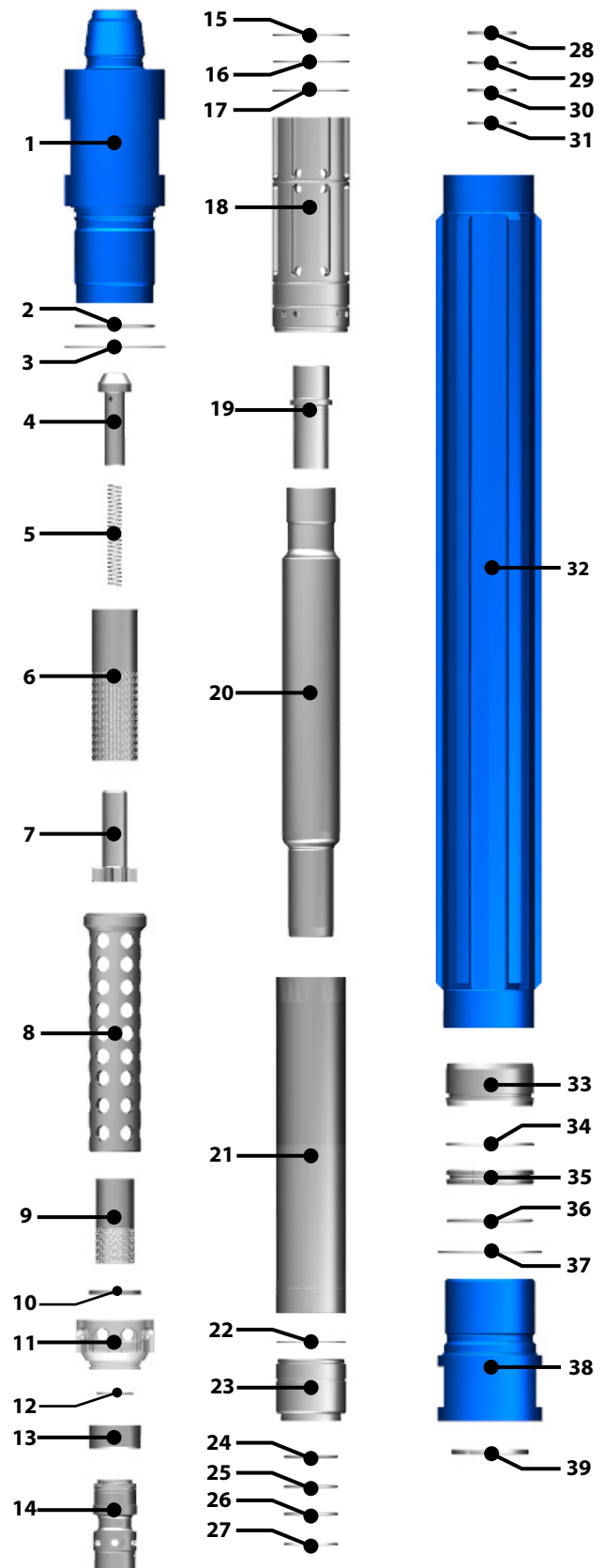
Dimensions & Weights

Top Sub	4½" API REG PIN
Effective Length (in / mm)	81.8 / 2078
OD Range (in / mm)	53.34 OR 9.88 / 210 OR 251
Weight w/o bit (lbs / Kg)	781 / 354
Piston Weight (lbs / Kg)	114 / 52

Drilling Parameters

Working Pressure (PSI / Bar)	750-2150 / 52-148
Application Bit (in / mm)	8.5-10.5 / 216-267
Feed Force (FT-lbs / M-Kg)	6770 / 936
Rotation Speed (RPM)	25-50
Rotation Torque (FT-lbs / M-Kg)	2250-3700 / 311-512
Frequency (blows / min)	1780

Exploded view



* Chuck No Drive Plates, Cushion Plate not used

** Cushion Ring user only when Chuck is Drive Plate version HPDK-W022DP

Fluid Consumption

PSI	Min	Max
New (Gal/Min)	75	125
Worn (Gal/Min)	120	200